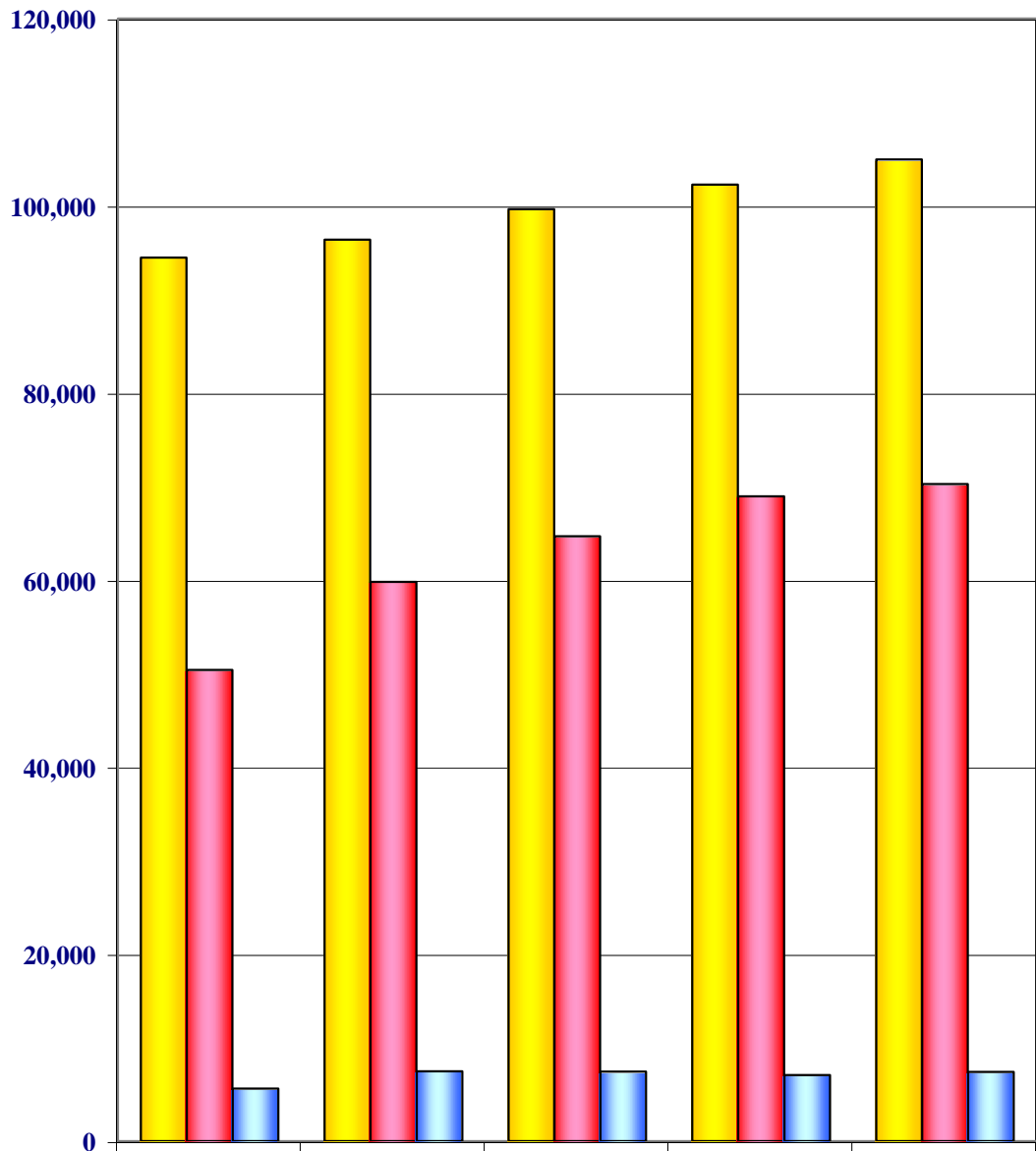


## EMPLEADOS DEL SECTOR PÚBLICO, AÑOS 1999 - 2003

*Empleados*



	1999	2000	2001	2002	2003
<span style="color: yellow;">■</span> Gobierno Central	94,456	96,371	99,618	102,255	104,936
<span style="color: red;">■</span> Inst. Aut. y Semi-Aut.	50,362	59,794	64,657	68,922	70,234
<span style="color: blue;">■</span> Municipios	5,621	7,449	7,436	7,060	7,402